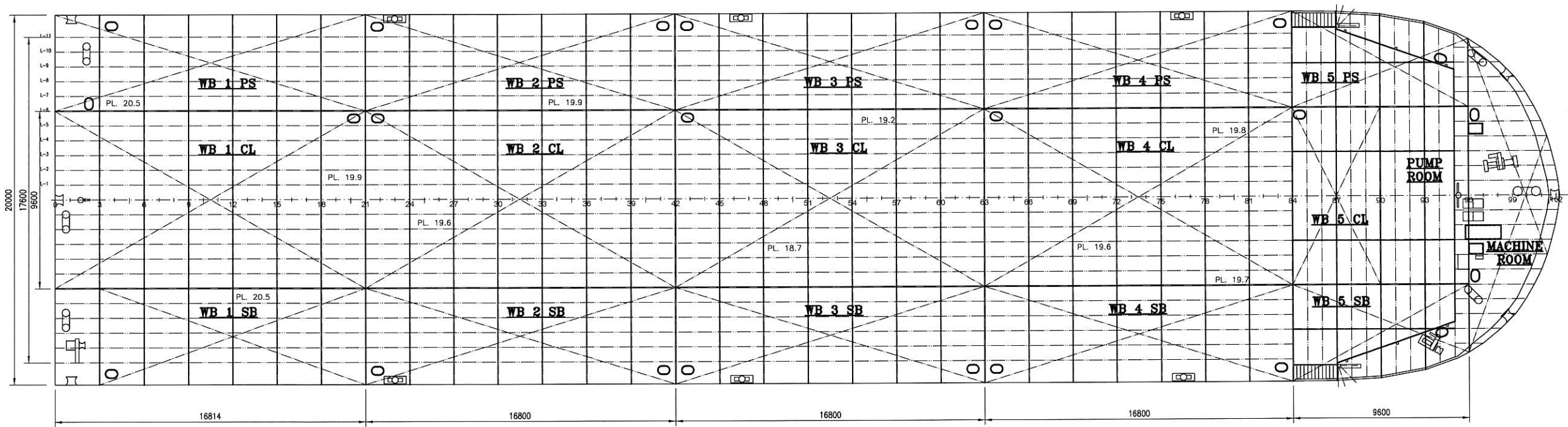
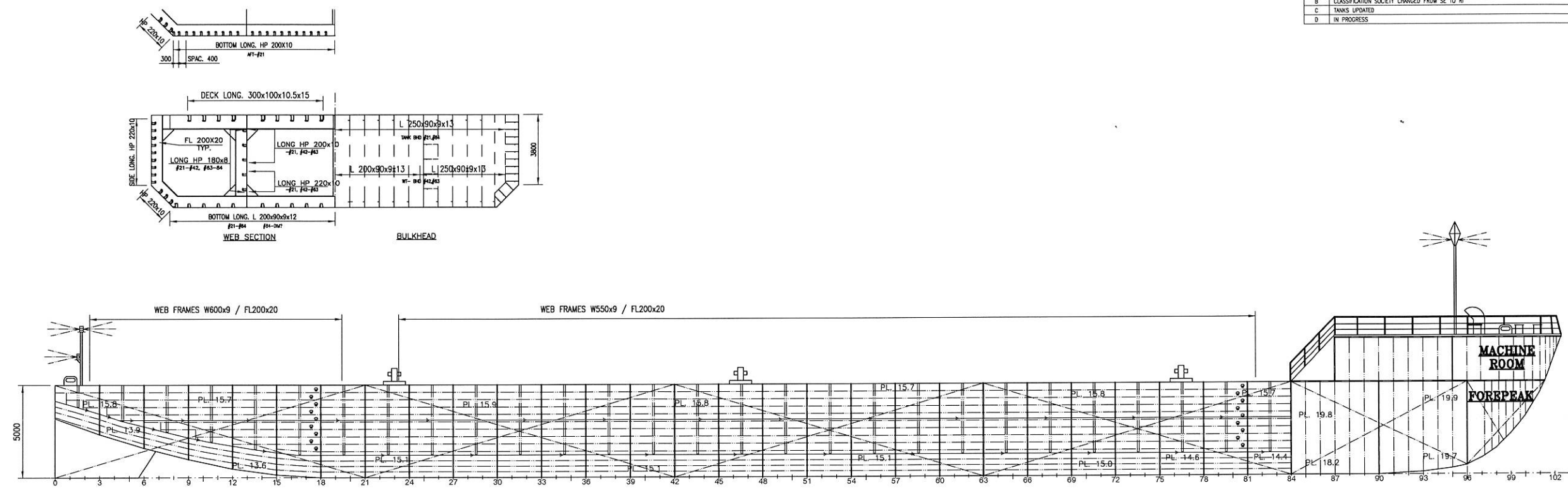


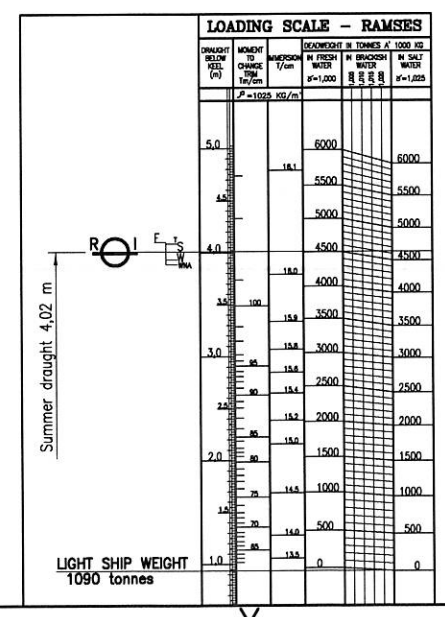
ISSUE	DESCRIPTION	DATE	DRWN	DATE	CHKD
B	CLASSIFICATION SOCIETY CHANGED FROM SE TO R	2013-04-04	ENL	2013-04-04	PH
C	TANKS UPDATED	2014-12-02	MAX	2014-12-02	MH
D	IN PROGRESS	XXXX-XX-XX	XX	XXXX-XX-XX	XX



TANK No	VOL. (m³)	LCG (m)	VCG (m)	MOM. OF IN. (m³)
WB 1 PS	328.0	9.63	2.95	193.1
WB 1 CL	625.5	9.61	2.89	1214.9
WB 1 SB	302.4	10.33	2.86	165.4
WB 2 PS	416.2	25.21	2.56	192.9
WB 2 CL	790.3	25.21	2.50	1213.9
WB 2 SB	416.2	25.21	2.56	192.9
WB 3 PS	416.2	42.01	2.56	192.9
WB 3 CL	790.3	42.01	2.50	1213.9
WB 3 SB	416.2	42.01	2.56	192.9
WB 4 PS	412.4	58.77	2.58	192.9
WB 4 CL	790.3	58.82	2.50	1213.9
WB 4 SB	412.4	58.77	2.58	192.9
WB 5 PS	173.0	71.27	2.97	93.8
WB 5 CL	222.6	69.60	2.54	346.8
WB 5 SB	173.0	71.27	2.97	93.8
FOREPEAK	94.4	78.06	3.63	613.5
TOTAL	6780.0	38.92	2.64	7520.17

** = ASSUMED PRINT: 300x300 mm
EVERY OTHER LOADCASE TO BE CONSIDERED SPECIALLY

PERMISSIBLE LOADS		
LOAD CASE	MAX. PERM. LOAD	DIM. FACTOR
ANYWHERE ON DECK	10.9 tonnes / m²	TRANSV. WEB
EVEN DISTRIBUTION: WEB	26.2 tonnes / m	TRANSV. WEB
EVEN DISTRIBUTION: LONG BHD.	14.8 tonnes / m	BHD. BUCKLING
EVEN DISTRIBUTION: TRANSV. BHD	47.7 tonnes / m	BHD. BUCKLING
POINT LOAD: ANYWHERE ON DECK	12.1 tonnes **	BENDING
POINT LOAD: ON LONGITUDINAL	18.6 tonnes **	BENDING
POINT LOAD: ON TRANSV. WEB	23.4 tonnes **	WELD
POINT LOAD: ON LONG. BULKHEAD	16.9 tonnes **	BHD. BUCKLING
POINT LOAD: ON TRANSV. BULKHEAD	23.4 tonnes **	WELD
POINT LOAD: BULKHEAD / WEB	46.7 tonnes **	WELD TO DECK
POINT LOAD: BULKHEAD / BULKHEAD	46.7 tonnes **	WELD TO DECK



MAIN DIMENSIONS:

LENGTH O.A.	81,90 m
LENGTH P.P.	80,70 m
BREADTH MLD.	20,00 m
DRAUGHT SUMMER	4,02 m
DEPTH MLD.	5,0 m
DEADWEIGHT	ABT. 4500 T
DECK AREA	1312 m²
CONTAINER CAPACITY	4x82 328 TEU
BALLAST CAPACITY	6780 m³
GROSS TONNAGE	2967
NET TONNAGE	891
FINNISH / SWEDISH ICE CLASS 1A	

RAMSES CAPACITY PLAN

Scale: 1:125

Company: Sandinge Bogsering & Sjötransport

Project: 10107-3-152

Issue: 1

Date: 2014-12-02